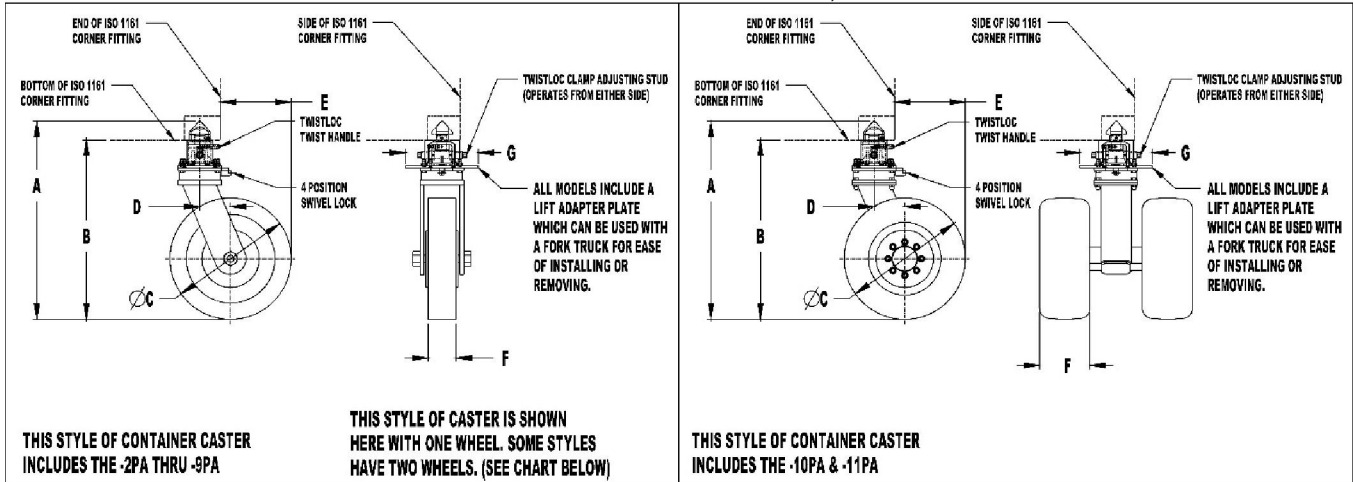


# CONTAINER CASTERS (AC49000A)

Cage Code: 65059 | Drawing No: SAC49000A | Revision: M | Sheet: 1 of 2

UNLESS OTHERWISE SPECIFIED, DIMENSIONS ARE IN INCHES



P/N	CAPACITY (LB.)	MAX SPEED (MPH)	TYPE OF WHEEL	NUMBER OF WHEELS	INFLATION PSI	A	B	C	D	E	F	G	WEIGHT (LB.)
AC49000A-2PA	2,500	5	URETHANE ON IRON	1	N/A	19.10	15.47	8.00	2.00	2.00	3.00	10.25	73.60
AC49000A-3PA	5,000	5	URETHANE ON IRON	1	N/A	21.59	17.96	10.00	2.63	3.63	5.00	12.00	126.00
AC49000A-4PA	10,000	5	URETHANE ON IRON	2	N/A	22.59	18.96	10.00	2.50	3.50	5.00	14.25	222.25
AC49000A-5PA	12,000	5	URETHANE ON IRON	2	N/A	24.59	20.96	12.00	2.88	4.88	5.00	14.25	241.25
AC49000A-6PA	16,800	5	URETHANE ON IRON	2	N/A	28.59	24.96	16.00	3.56	7.56	5.00	14.25	292.25
AC49000A-7PA	3,120	5	PNEUMATIC	2	85	30.59	26.96	18.00	4.50	9.50	6.00	12.00	112.00
AC49000A-8PA	5,550	5	PNEUMATIC	2	115	35.34	31.71	23.00	5.00	12.50	7.25	14.25	203.00
AC49000A-9PA	7,260	5	PNEUMATIC	2	100	37.84	34.21	25.00	5.00	13.50	7.75	14.25	239.00
AC49000A-10PA	9,460	6	PNEUMATIC	2	130	37.59	33.96	23.54	5.00	12.77	7.13	12.00	294.00
AC49000A-11PA	15,000	6	PNEUMATIC	2	145	38.59	34.96	23.62	6.00	13.81	9.84	14.25	524.00
AC49000A-12PA	18,000	5	URETHANE ON IRON	2	N/A	32.59	28.96	20.00	4.31	10.31	5.00	14.25	347.00
AC49000A-13PA	10,000	5	NYLATRON HD	1	N/A	17.63	14.00	6.00	1.75	.75	3.00	12.00	70.00

**NOTE:**

1. THESE CASTERS USE A SWIVEL WITH A SWIVEL LOCKING FEATURE. TO ORDER A RIGID CASTER, ADD -R TO THE END OF A PART NUMBER. (EXAMPLE: AC49000A-2PA-R)
2. ALL THE CASTERS HAVE AN OPERATING TEMPERATURE OF (-40°F TO 120°F).
3. THE TWISTLOC, WHEEL MOUNT AND AXLE ARE STEEL.  
SEE THE CHART FOR MATERIAL OF THE WHEELS.
4. FINISH: TOP CASTERLOC IS GALVANIZED, BOTTOM CASTER IS PAINTED.
5. FOR USE IN ISO 1161 STEEL CORNER FITTINGS AS NORMALLY USED ON STANDARD FREIGHT CONTAINERS OR SIMILAR CONSTRUCTIONS.
6. SEE SHEET 2 FOR USE INSTRUCTION.
7. TO ORDER SOLID CASTERS ADD A S TO THE END OF A PART NUMBER. (EXAMPLE: AC49000A-11PAS)

To avoid lifter failure, potential death and property damage, never exceed WLL (Working Load Limit).

This document contains the proprietary information of Tandemloc, Inc. and your access and use shall be, and is at all times, pursuant to and limited by the Tandemloc, Inc. Terms of Use.

You shall not, and shall not encourage, assist, or authorize another party to copy, distribute, publicly display, modify, reverse engineer, decompile, or take any other action to reproduce this document or the information contained herein. © Copyright 2014 by Tandemloc, Inc.

Dimensions are subject to manufacturing tolerance and change.



Email: [info@tandemloc.com](mailto:info@tandemloc.com) • [www.tandemloc.com](http://www.tandemloc.com)

824 Highway 101 • Havelock, NC 28532

Tel: 1.800.258.7324 (252.447.7155)

FAX 1.800.892.3273 (252.447.5502)

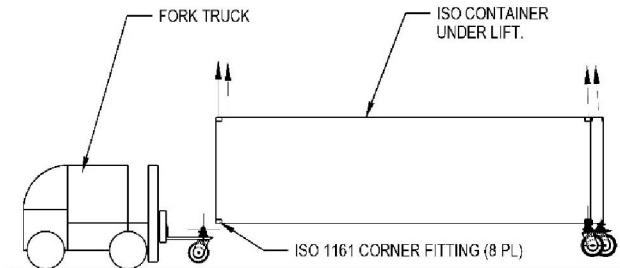
Tandemloc, Inc. designs, manufactures and tests lifting, securing and mobilizing components for all industries. See our website for details and important safety information.

Read all safety labels and instructions prior to use. Product to be used by qualified personnel only.

# CONTAINER CASTERS (AC49000A)

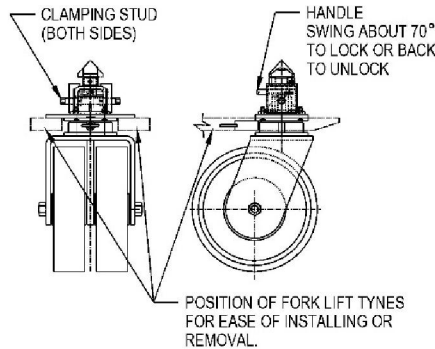
Cage Code: 65059 | Drawing No: SAC49000A | Revision: M | Sheet: 2 of 2

UNLESS OTHERWISE SPECIFIED, DIMENSIONS ARE IN INCHES



## WARNING

WHEN PLACING OR REMOVING CASTERS FROM CORNERS, USE A FORK TRUCK, AS SHOWN, TO RAISE OR LOWER THE CASTERLOC. PERSONNEL ARE TO STAND CLEAR OF ADJACENT AREAS TO AVOID INJURY OR DEATH IF ACCIDENTALLY DROPPED.



## NOTICE

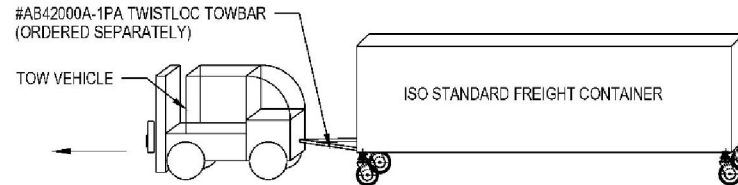
LIFTING AND HANDLING ISO FREIGHT CONTAINERS SHOULD BE DONE BY QUALIFIED PERSONNEL FAMILIAR WITH ISO STANDARD 3874. THIS STANDARD IS AVAILABLE FROM THE INTERNATIONAL STANDARDS ORGANIZATION (IN THE USA; AMERICAN NATL STDS INSTITUTE ANSI).

## INSTALLING INTO STANDARD ISO CONTAINERS WITH ISO 1161 CORNER FITTINGS AT CORNERS:

1. LIFT CONTAINER PER INTERNATIONAL STANDARD (ISO) 3874 OR OTHER MEANS SO THAT THE BOTTOM SURFACE OF THE CORNER FITTINGS ARE ABOUT 40" ABOVE THE ROLLING SURFACE.
2. WITH A FORK LIFT TRUCK RAISE THE UNLOCKED CASTERLOC INTO THE BOTTOM HOLE OF EACH CORNER FITTING & ACTIVATE THE TWIST LOCK WITH ITS HANDLE. BEFORE LOWERING THE CONTAINER, ADJUST THE CLAMPING STUD TO TIGHTEN CONNECTION (.50 TO 125 FT/LB.).
3. **NOTICE - TIGHTENING MUST BE DONE BEFORE LOWERING.** WHEN ALL FOUR CASTERLOCS ARE TIGHT, LOWER THE CONTAINER TO THE LEVEL ROLLING SURFACE.
4. THE CONTAINER MAY BE RAISED A SECOND TIME & RETIGHTENED TO THE SAME TORQUE AFTER "SETTLING", IF DESIRED.

## OPERATION:

1. MOVING STANDARD FREIGHT CONTAINERS ON CASTERS DIFFERS FROM MOVING CONTAINERS ON A CHASSIS BECAUSE THE CASTER CONNECTION HAS LESS HORIZONTAL STRUCTURAL STRENGTH. FOR THIS REASON, THE SPEED OF MOVEMENT MUST BE SLOWER AND THE SURFACE ON WHICH THE CASTER ROLLS, MUST BE REASONABLY SMOOTH. EXCESSIVE FORCES IN A HORIZONTAL DIRECTION CAN CAUSE FAILURE. FOR THIS REASON, SPEED SHALL NOT EXCEED THE LIMIT SHOWN FOR EACH CASTER.
2. MOVING HEAVY CONTAINERS ON CASTERS REQUIRES THAT ITS MOVEMENT ALWAYS BE UNDER CONTROL FOR DIRECTION AND BRAKING ON BOTH LEVEL AND UNLEVEL SURFACES. A TOWING VEHICLE WITH TOW BARS AFFIXED TO THE FORWARD BOTTOM CORNERS IS THE OPTIMUM METHOD OF MOVING & BRAKING. PERSONNEL SHOULD REMAIN CLEAR OF THE ROLL PATH TO PREVENT INJURY. SUFFICIENT PERSONNEL SHOULD BE UTILIZED FOR GOOD VISIBILITY.



## WARNING

CASTERS CAN ALLOW LOADS TO MOVE ON UNLEVEL SURFACE & CRUSH PERSONNEL. LOCK SWIVEL CASTERS IN TOWING DIRECTION & CHOCK BEFORE DETACHING TOW VEHICLE. WHEN TOWING, SWIVELS ON TOW END SHOULD BE UNLOCKED AFTER CONNECTING TOW VEHICLE & BEFORE STARTING TOW.

To avoid lifter failure, potential death and property damage, never exceed WLL (Working Load Limit).

This document contains the proprietary information of Tandemloc, Inc. and your access and use shall be, and is at all times, pursuant to and limited by the Tandemloc, Inc. Terms of Use.

You shall not, and shall not encourage, assist, or authorize another party to copy, distribute, publicly display, modify, reverse engineer, decompile, or take any other action to reproduce this document or the information contained herein. © Copyright 2014 by Tandemloc, Inc.

Dimensions are subject to manufacturing tolerance and change.



Email: [info@tandemloc.com](mailto:info@tandemloc.com) • [www.tandemloc.com](http://www.tandemloc.com)

824 Highway 101 • Havelock, NC 28532

Tel: 1.800.258.7324 (252.447.7155)

FAX 1.800.892.3273 (252.447.5502)

Tandemloc, Inc. designs, manufactures and tests lifting, securing and mobilizing components for all industries. See our website for details and important safety information.

Read all safety labels and instructions prior to use. Product to be used by qualified personnel only.