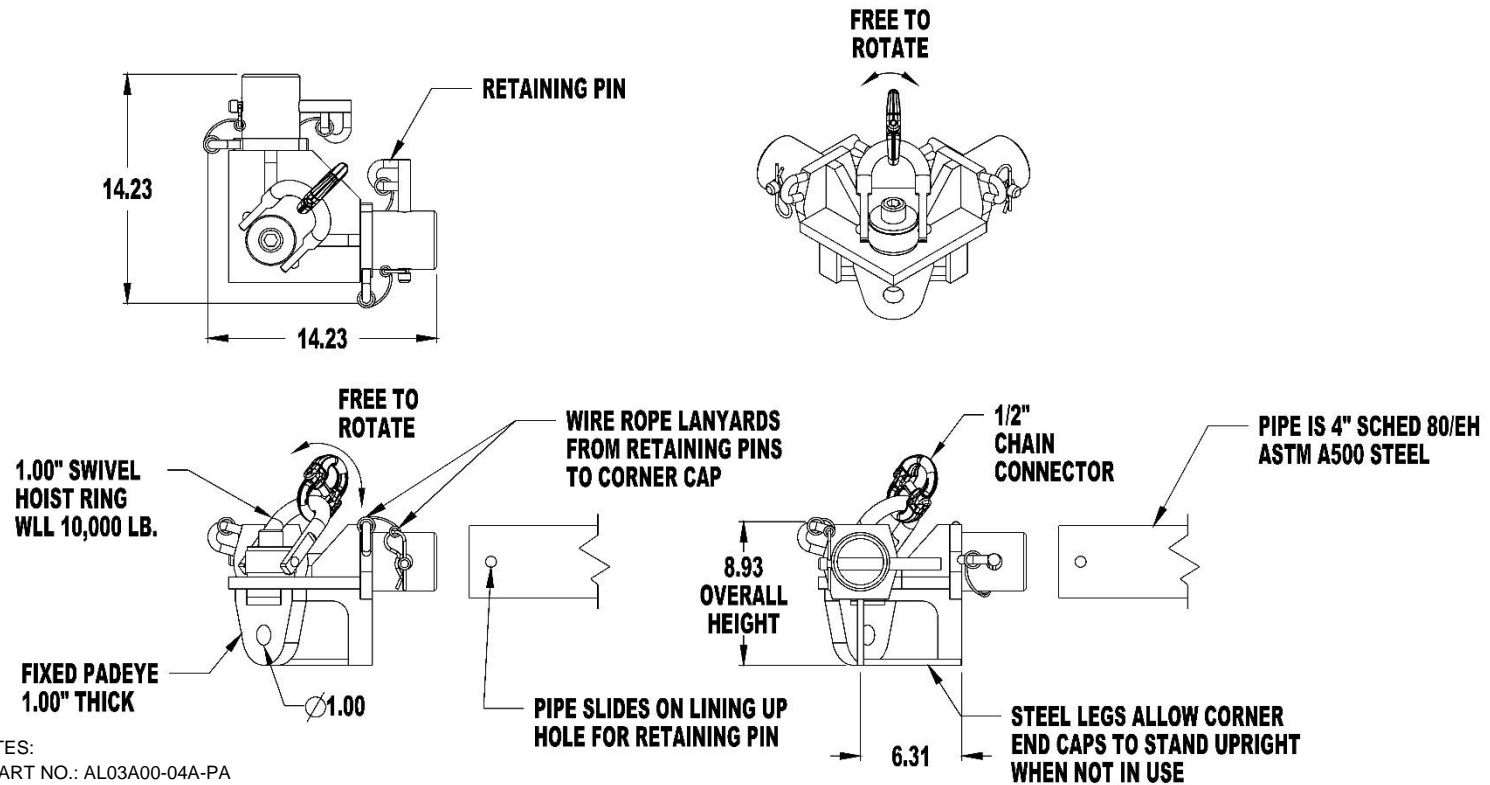


4" CORNER CAP FRAME SPREADER, WLL 28,288 LB. (AL03A00-04A-PA)

Cage Code: 65059 | Drawing No: SAL03A00-04A-PA | Revision: A | Sheet: 1 of 2

UNLESS OTHERWISE SPECIFIED, DIMENSIONS ARE IN INCHES



NOTES:

1. PART NO.: AL03A00-04A-PA
2. FRAME WLL: 28,288 LB. @ 45 DEG
3. PROOF TESTED TO 125% (35,360 LB.) AND CERTIFIED
4. CORNER WLL: 10,000 LB. MAX STRAIGHT TENSION PER CORNER (7,072 LB. @ 45 DEG SLING ANGLE)
5. STANDARD SPECIFICATION # EAD21000A APPLIES
6. FINISH: SANDBLAST, PRIME AND PAINT SAFETY YELLOW
7. CALCULATED WEIGHT: 62 LB. PER CORNER
8. DESIGNED AND MANUFACTURED TO MEET OR EXCEED ASME B30.20 AND BTH-1, DESIGN CATEGORY B, SERVICE CLASS 0.
9. FACTOR OF SAFETY: 5:1 TO ULTIMATE, 3:1 TO YIELD, MINIMUM.

To avoid lifter failure, potential death and property damage, never exceed WLL (Working Load Limit).

This document contains the proprietary information of Tandemloc, Inc. and your access and use shall be, and is at all times, pursuant to and limited by the Tandemloc, Inc. Terms of Use.

You shall not, and shall not encourage, assist, or authorize another party to copy, distribute, publicly display, modify, reverse engineer, decompile, or take any other action to reproduce this document or the information contained herein. © Copyright 2014 by Tandemloc, Inc.

Dimensions are subject to manufacturing tolerance and change.



Email: info@tandemloc.com • www.tandemloc.com

824 Highway 101 • Havelock, NC 28532

Tel: 1.800.258.7324 (252.447.7155)

FAX 1.800.892.3273 (252.447.5502)

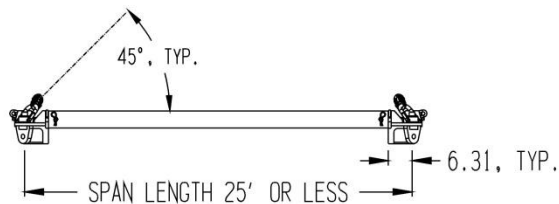
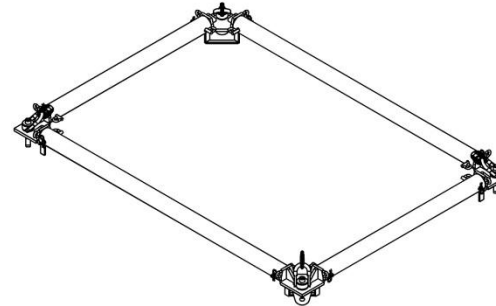
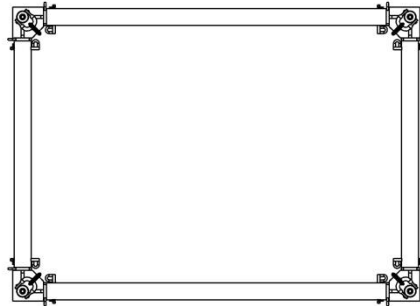
Tandemloc, Inc. designs, manufactures and tests lifting, securing and mobilizing components for all industries. See our website for details and important safety information.

Read all safety labels and instructions prior to use. Product to be used by qualified personnel only.

4" CORNER CAP FRAME SPREADER, WLL 28,288 LB. (AL03A00-04A-PA)

Cage Code: 65059 | Drawing No: SAL03A00-04A-PA | Revision: A | Sheet: 2 of 2

UNLESS OTHERWISE SPECIFIED, DIMENSIONS ARE IN INCHES



USAGE NOTES:

1. FRAMES MAY BE MADE WITH EQUAL LENGTH PARALLEL SIDES IN SQUARE OR RECTANGLE SHAPES.
2. FRAME LENGTH SHOULD NOT EXCEED A SPAN LENGTH OF 25 FEET WITHOUT CONTACTING TANDEMLOC FOR ADDITIONAL INFORMATION.
3. CUT LENGTH IS DETERMINED BY SUBTRACTING 12.62" FROM THE DESIRED SPAN LENGTH.
4. ONCE PIPE IS CUT A Ø1.00" HOLE NEEDS TO BE DRILLED THRU THE PIPE 2.00" FROM THE END FOR THE SAFETY PIN.
5. TOP SLINGS ARE TO ONLY BE MADE IN A 4 LEG ASSEMBLY AT 45° TO 80°.
6. BOTTOM SLINGS ARE TO PULL STRAIGHT DOWN AT 90°± 5° TO THE FRAME.

To avoid lifter failure, potential death and property damage, never exceed WLL (Working Load Limit).

This document contains the proprietary information of Tandemloc, Inc. and your access and use shall be, and is at all times, pursuant to and limited by the Tandemloc, Inc. Terms of Use.

You shall not, and shall not encourage, assist, or authorize another party to copy, distribute, publicly display, modify, reverse engineer, decompile, or take any other action to reproduce this document or the information contained herein. © Copyright 2014 by Tandemloc, Inc.

Dimensions are subject to manufacturing tolerance and change.



Email: info@tandemloc.com • www.tandemloc.com

824 Highway 101 • Havelock, NC 28532

Tel: 1.800.258.7324 (252.447.7155)

FAX 1.800.892.3273 (252.447.5502)

Tandemloc, Inc. designs, manufactures and tests lifting, securing and mobilizing components for all industries. See our website for details and important safety information.

Read all safety labels and instructions prior to use. Product to be used by qualified personnel only.